

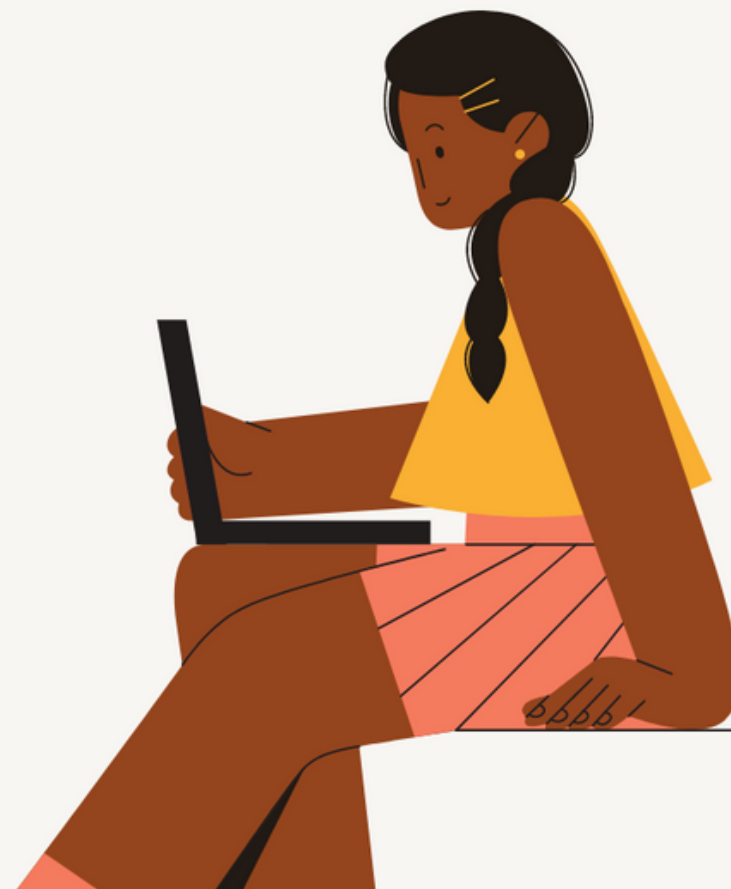


WELCOME RISING FRESHMEN

CLASS OF 2028!!!

don't limit
yourself,
keep trying
new things

Reallygreatsite.com





PURPOSE OF TODAY



INTRODUCTION TO WEST HIGH SCHOOL

HIGH SCHOOL CREDITS

FRESHMAN CORE CLASSES

ELECTIVE OPTIONS

ELECTIVE REGISTRATION PROCESS



START TIME

END TIME

6 CLASSES

VS

7 CLASSES

DIFFERENCES
YOU CAN
EXPECT
NEXT YEAR

**YOU MUST PASS
CLASSES TO EARN
CREDIT IN ORDER TO
GRADUATE FROM THE
ASD....**

**ROTATING
BLOCK
SCHEDULE**



FRESHMAN FAIR

**PLEASE ATTEND THE FRESHMAN FAIR ON
MARCH 20TH!
FROM 6-8P.M.**



WE WILL HAVE MORE FRESHMAN ACADEMY INFO TO SHARE....



ASD

GRADUATION REQUIREMENTS

LANGUAGE ARTS

4 CREDITS

SOCIAL STUDIES

4 CREDITS

MATHEMATICS

3 CREDITS

SCIENCE

3 CREDITS

PHYSICAL EDUCATION

1.5 CREDITS

ELECTIVES

7 CREDITS

22.5 TOTAL

WHAT CORE CLASSES WILL I TAKE AS A FRESHMAN ?

ENGLISH

ENGLISH I OR ADVANCED ENGLISH 1

SOCIAL STUDIES

AK STUDIES

ADDITIONAL FRESHMAN COURSE**

CAREER EXPLORATION

SCIENCE

BIOLOGY

MATH ORDER: (NEXT LEVEL)

MATH 8 - ALGEBRA

ALGEBRA - GEOMETRY

GEOMETRY - ALGEBRA II

DON'T WORRY...

YOUR 8TH GRADE TEACHERS WILL RECOMMEND WHAT CORE CLASS IS BEST FOR YOU!

FRESHMAN ELECTIVES





MUSIC ELECTIVES

BAND
ORCHESTRA
CHOIR

BEGINNING UKULELE





FOREIGN LANGUAGES



SPANISH

FRENCH

GERMAN

RUSSIAN

SPANISH IMMERSION

RUSSIAN IMMERSION



Hi!

嗨

Hola!

ART ELECTIVES

MULTIMEDIA DESIGN

ART STUDIO

PAINTING

DRAWING AND DESIGN

PRINTMAKING

POTTERY

*PHOTOGRAPHY



P.E. ELECTIVES



FIRST AID

****FITNESS BASICS**

DANCE

VOLLEYBALL

****PURSUING WELLNESS**

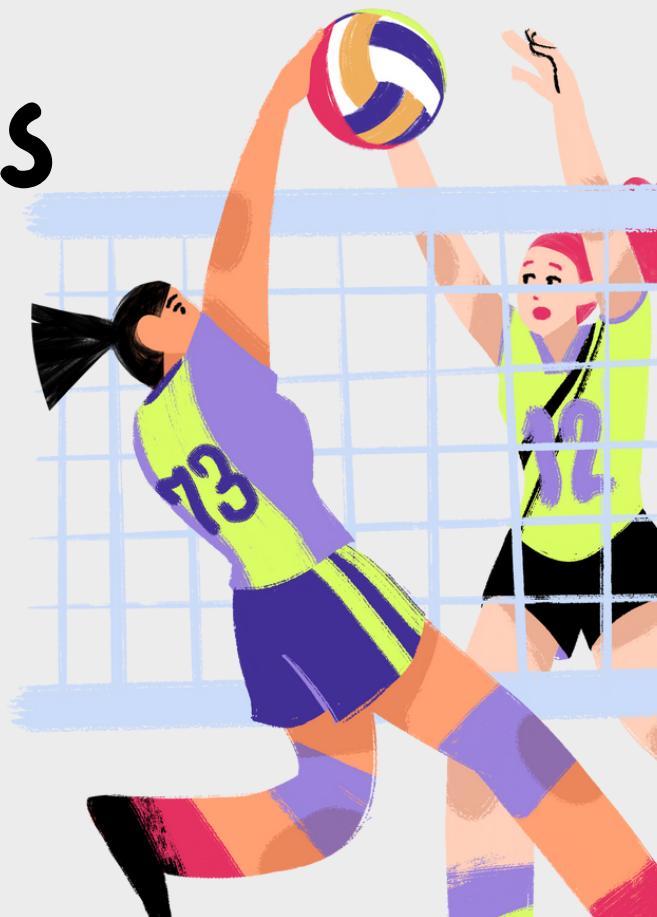
FIRST AID

WEIGHT LIFTING

INDIV.REC GAMES

YOGA

DANCE, INTRODUCTORY



ALTERNATIVES TO P.E.

***AJROTC (UNIFORM REQUIREMENT)**

PE WAIVER FOR JROTC PARTICIPATION: UPON SUCCESSFUL FIRST SEMESTER COMPLETION OF JROTC, STUDENTS WILL RECEIVE A .5 ELECTIVE CREDIT. UPON SUCCESSFUL SECOND SEMESTER COMPLETION OF JROTC, STUDENTS WILL RECEIVE A .5 ELECTIVE AND A WAIVER OF .5 CREDIT OF THEIR PE REQUIREMENT.

***SCHOOL SPORTS**

STUDENTS MAY OBTAIN A WAIVER OF .25 OF THE PHYSICAL EDUCATION GRADUATION REQUIREMENT FOR EACH FULL SEASON OF ASAA-SANCTIONED SPORTS PARTICIPATION WITHIN THE ANCHORAGE SCHOOL DISTRICT.

SPECIAL PROGRAMS

PLTW ACADEMIES:

AMP

**"ANCHOR MEDIA
PRODUCTION"**

MEDICAL "HOSA"

ENGINEERING

MATH:

A.M.P.E.D ALGEBRA

FRESHMAN YEAR COURSE SELECTION



Get your Chromebook out and login to student connect/Q

How to select your courses video



ELECTIVE COURSE

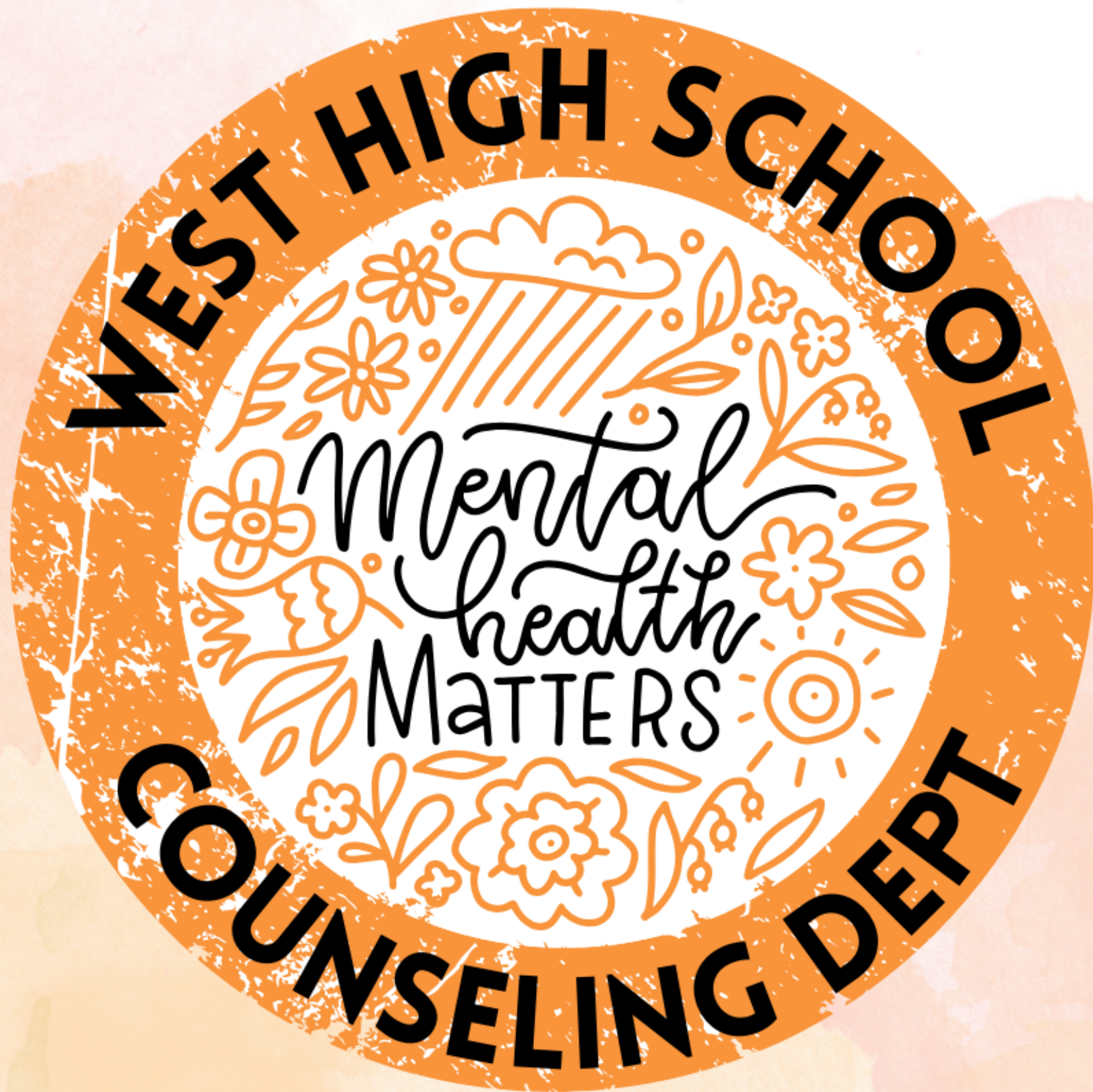
SELECTION

CLOSES

MARCH 22ND!!!



QUESTIONS?



**Want to keep up with
counseling updates & news?**

college visits, events, post-secondary, etc

FOLLOW US ON INSTAGRAM!



@whs.counseling.dept